

# Outcomes Comparison of Robotic & Lap SCOLA

**Fareed Cheema, MD**

**Assistant Professor of Surgery**

**NYU Langone-Brooklyn**

BROOKLYN ENDOSCOPY  
AND  
AMBULATORY SURGERY CENTER

# Disclosures

- I have no disclosures

What's in a name?

MILAR

SCOLA

REPA

ENDOR

ELAR

SCOM

SVAWD

# Indication

- Concomitant presence of Diastasis Recti is one of the most important factors associated with recurrence after midline abdominal hernia repair
- Small to moderate midline hernias (<2cm) with concomitant mild to moderate diastasis recti (3-5cm)

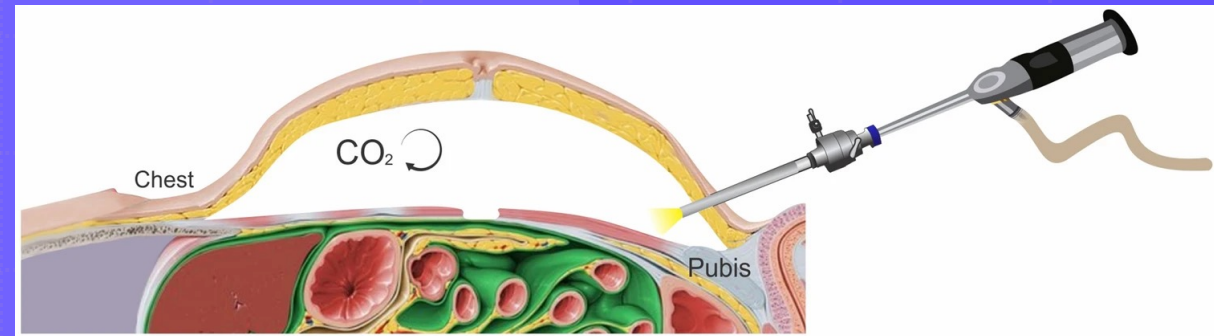
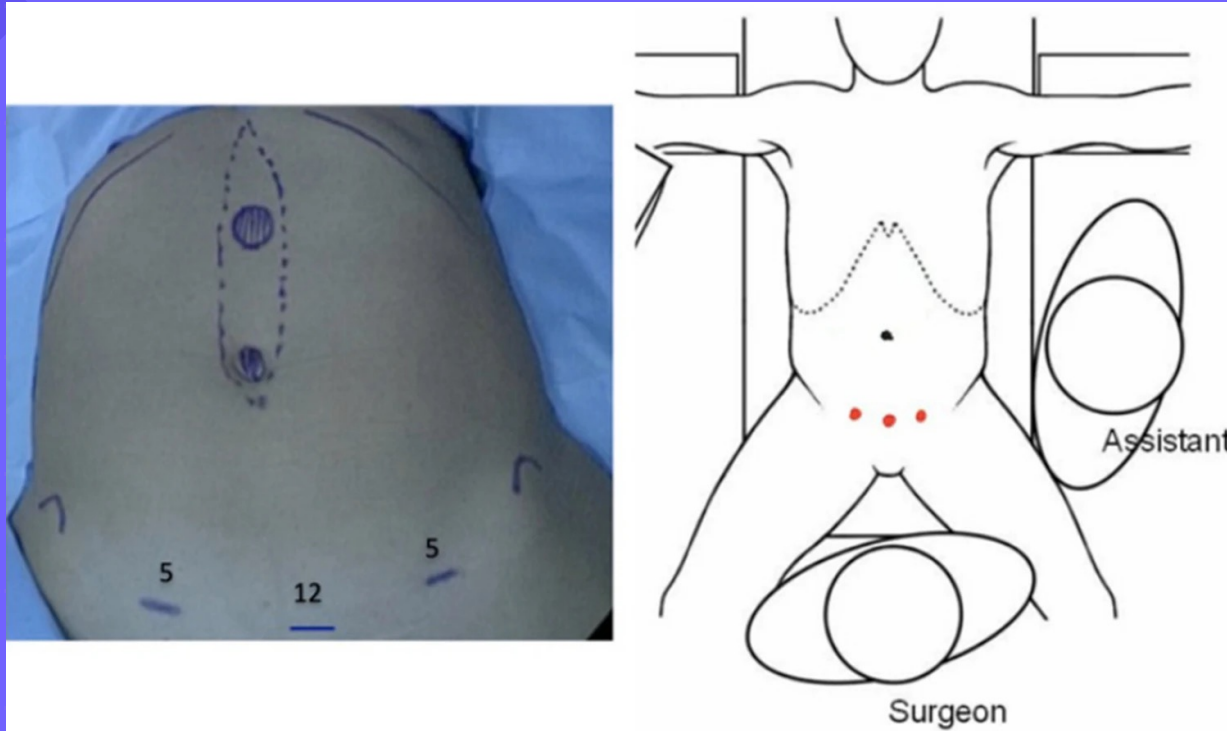
# History

- Laparoscopic subcutaneous approach w/mesh repair first described in 2015<sup>1</sup>
  - 23% seroma rate
  - Avg 20 months follow up: zero recurrences
- Modification known as SCOLA in 2018<sup>2</sup>
  - Onlay mesh
  - 48 patients
  - Mean OR time: 93 mins
  - 27% seroma rate, higher with increased BMI
  - 8 month follow up: one recurrence

1. Bellido Luque, J., Bellido Luque, A., Valdivia, J. et al. Totally endoscopic surgery on diastasis recti associated with midline hernias. The advantages of a minimally invasive approach. Prospective cohort study. *Hernia* **19**, 493–501 (2015).

2. Claus CMP, Malcher F, Cavazzola LT, Furtado M, Morrell A, Azevedo M, Meirelles LG, Santos H, Garcia R. SUBCUTANEOUS ONLAY LAPAROSCOPIC APPROACH (SCOLA) FOR VENTRAL HERNIA AND RECTUS ABDOMINIS DIASTASIS REPAIR: TECHNICAL DESCRIPTION AND INITIAL RESULTS. *Arq Bras Cir Dig.* 2018 Dec 6;31(4):e1399. doi: 10.1590/0102-672020180001e1399. PMID: 30539974; PMCID: PMC6284377.

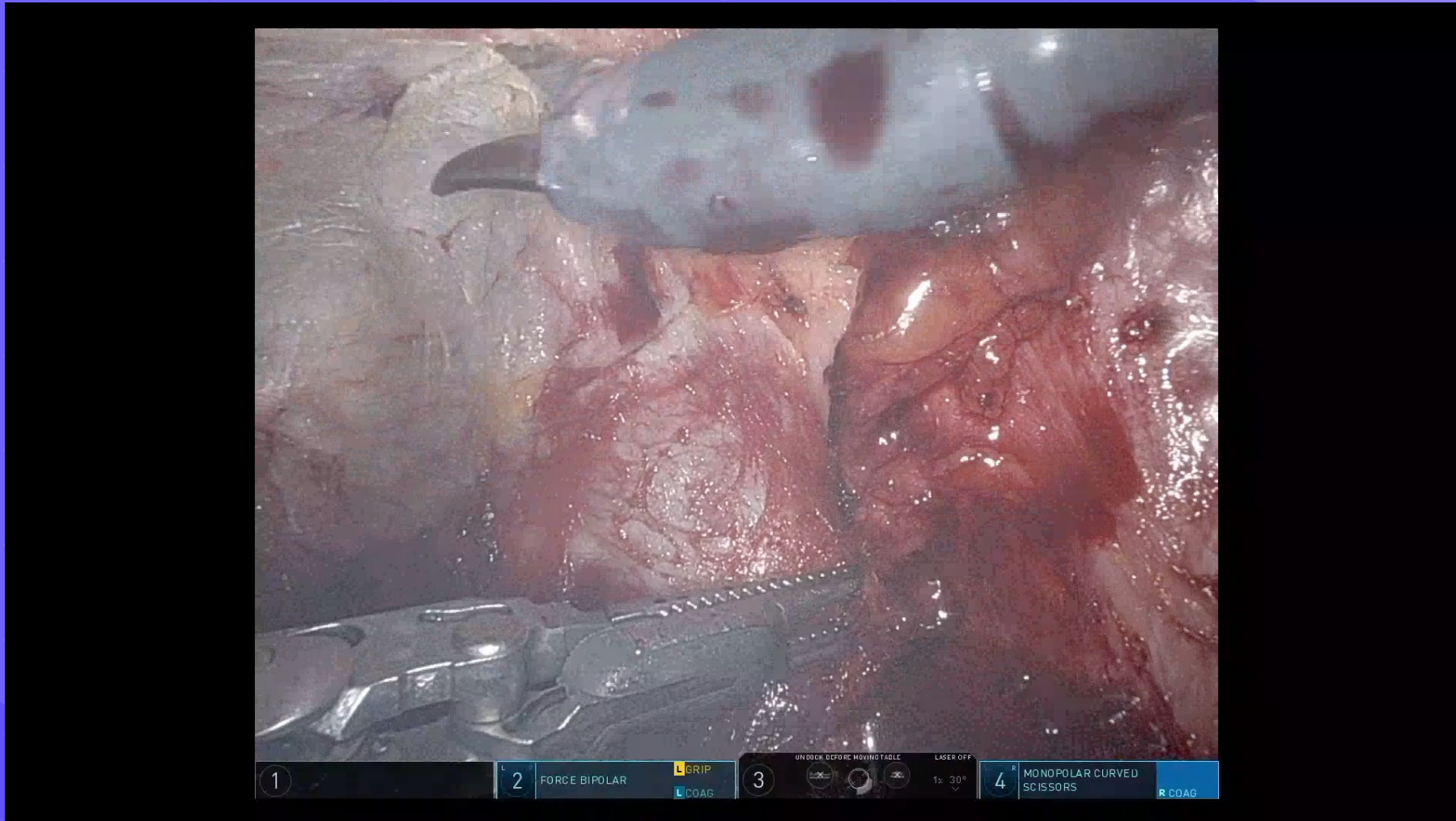
# SCOLA technique



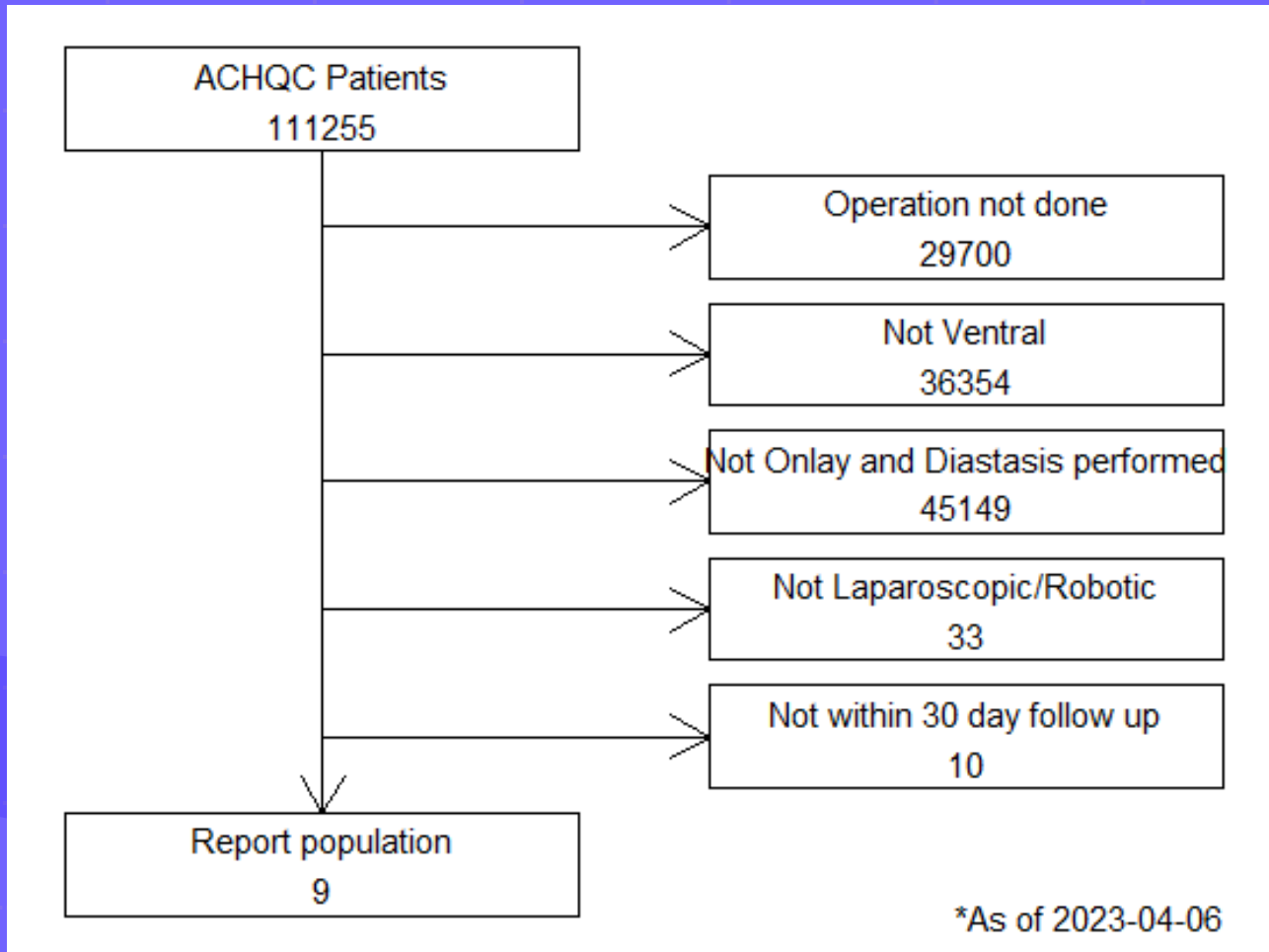
3. Claus, C., Cavazzola, L. & Malcher, F. SubCutaneous OnLay endoscopic Approach (SCOLA) for midline ventral hernias associated with diastasis recti. *Hernia* 25, 957-962 (2021).

4. Dong, C.T., Sreeramoju, P., Pechman, D.M. *et al.* SubCutaneous OnLay endoscopic Approach (SCOLA) mesh repair for small midline ventral hernias with diastasis recti: An initial US experience. *Surg Endosc* 35, 6449-6454 (2021).

# Robotic technique



# Laparoscopic vs Robotic SCOLA



## Characteristics

- 5 lap and 4 robo patients
- Median BMI 24.8
- VHWG Grade I or II hernias

## Outcomes

- 1 SSI
- 3 SSO, no SSOP
- No recurrences



Thank you!

