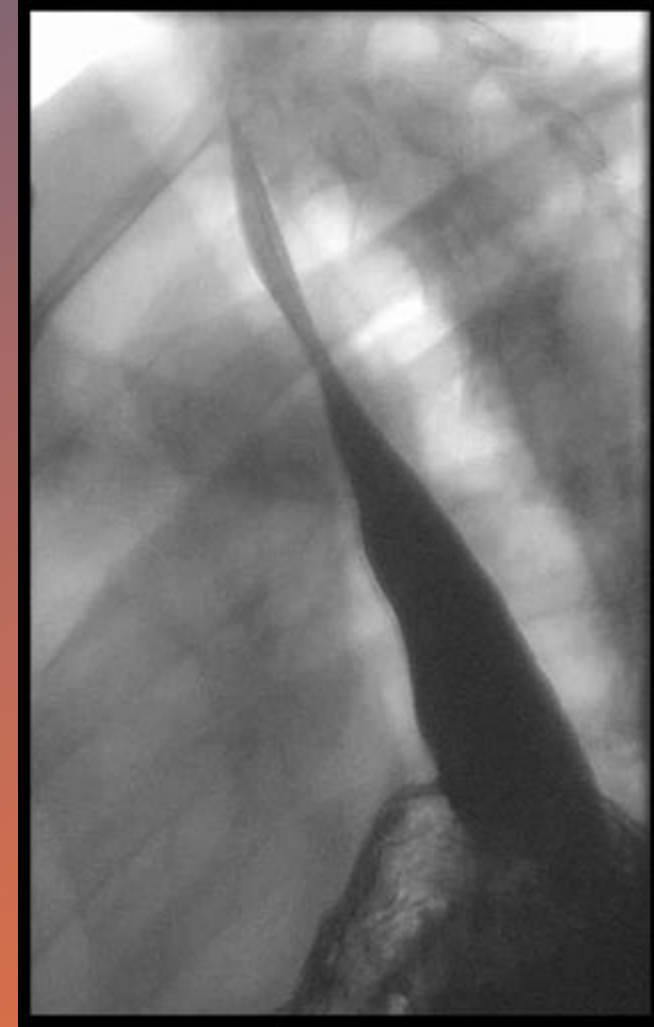
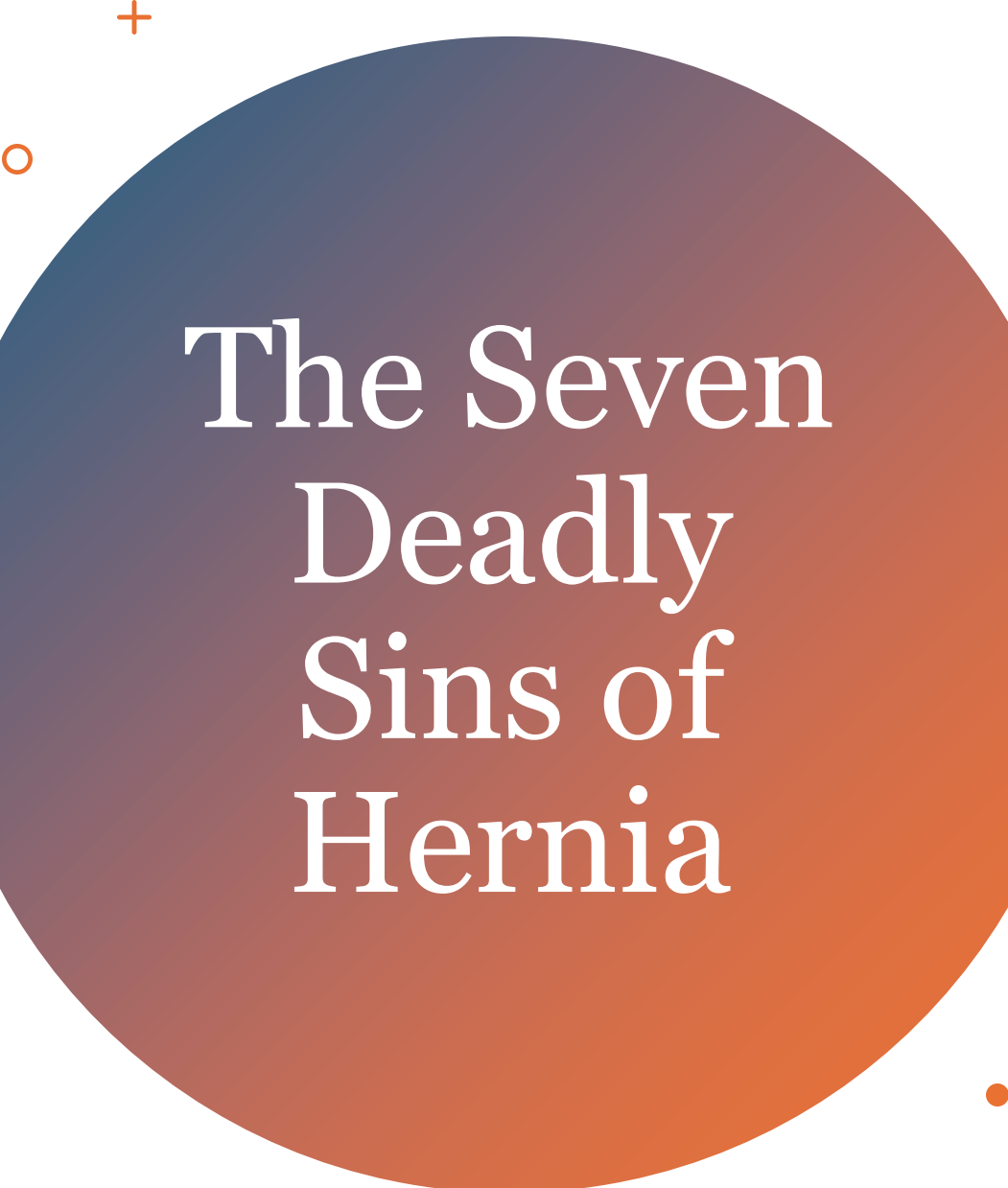


# Paraesophageal Hernia Repair Tips and Tricks


Ivy N. Haskins, MD

Associate Professor of Surgery  
Co-Director, Esophageal Diseases and  
Gastrointestinal Motility Disorders  
Clinic  
University of Nebraska Medical Center  
Omaha, NE





# The Seven Deadly Sins of Hernia

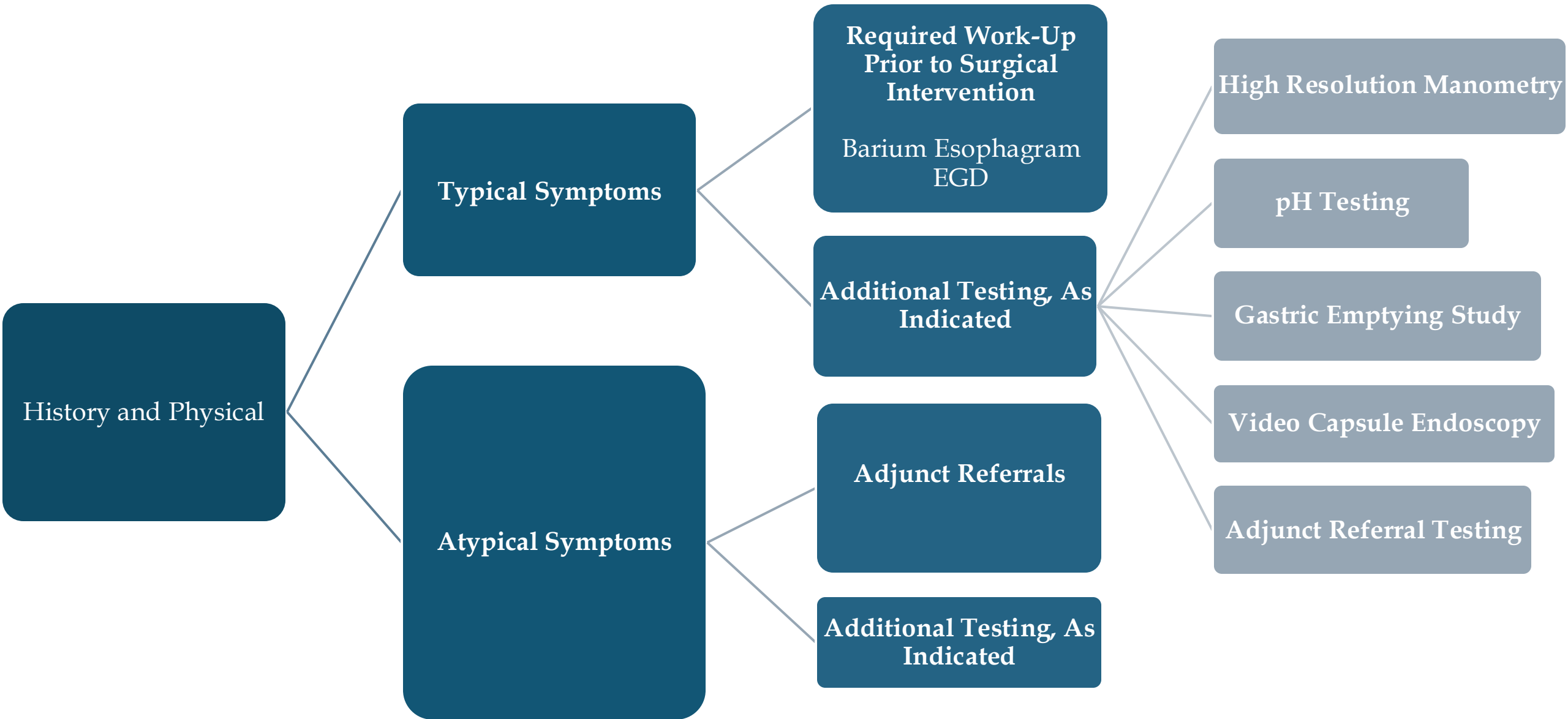
1. Sloth → Avoid Easy and Lazy
  2. Pride → Avoidance of Magical Thinking
  3. Greed → Don't Do More than is Needed
  4. Lust → Responsible Adoption
  5. Envy → Standardization of Technique
  6. Gluttony → Keep Things Simple
  7. Wrath → Preparedness and Competence
- 

+  
•  
◦

It's Not Just About  
Operative Technique!

+  
•  
◦

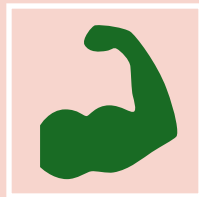
---



# It's Not Just About Operative Technique



SAP



Esophageal Augmentation

# Operative Technique



# Avoiding Deadly Sins 5 and 6

Arms Tucked

Foot Board

DaVinci Xi

Left-Sided Dock

5 Ports

- 8 mm
- 15 cm from xiphoid process
- 3 to the left of the umbilicus
- Right-sided port at least mid-clavicular line (or more lateral)
- Assist port inferior to umbilicus on the right



# Avoiding Deadly Sins 5 and 6

30° Reverse Trendelenburg

E-100 Generator\*

Instruments:

- 30 Degree Camera
- Cadierre Forceps x 2
- Synchro Seal
- Mega SutureCut Needle Driver

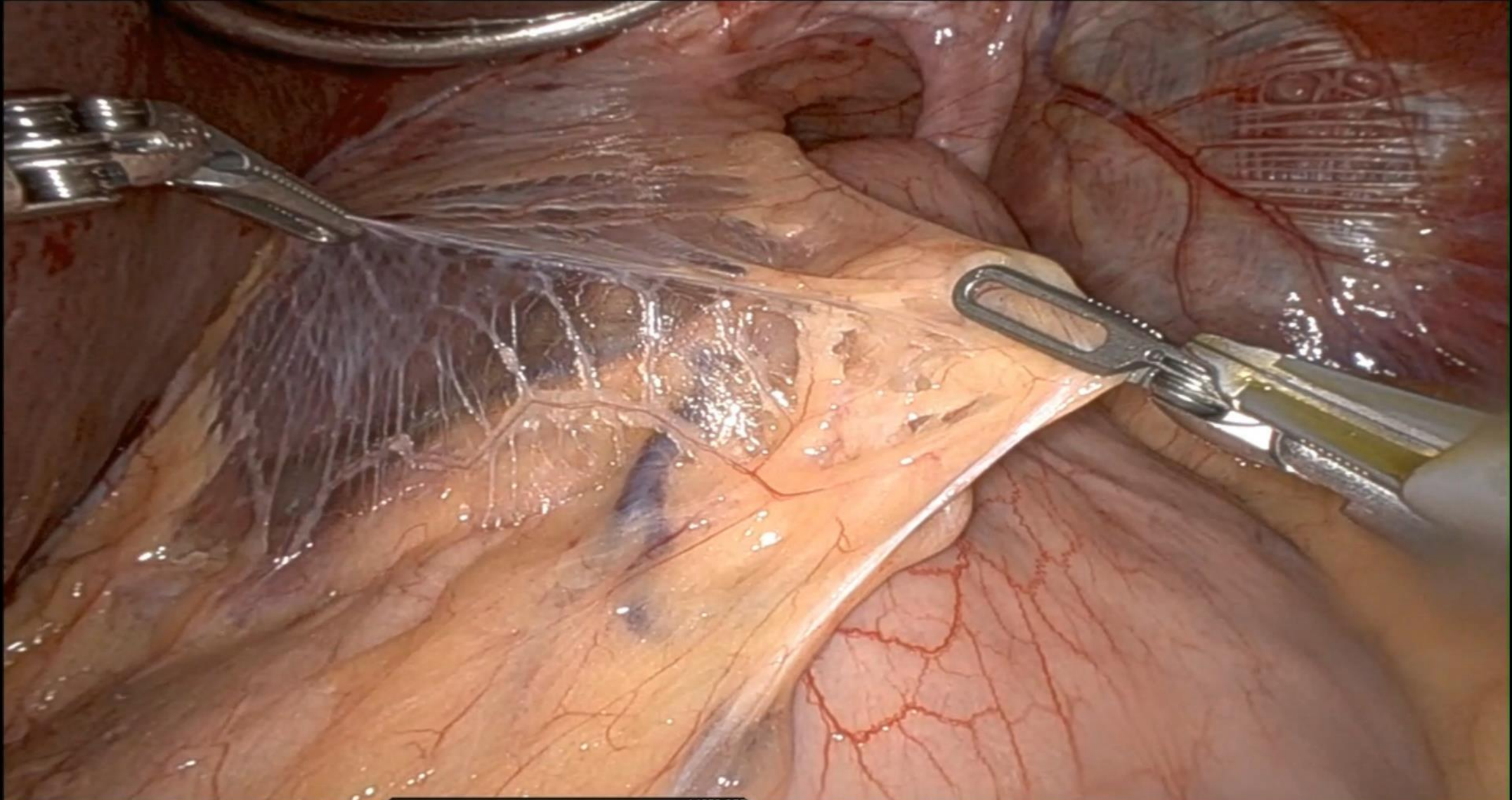
OG Tube or EGD Decompression

12 mg Decadron Post-Intubation



# • + Right-Sided Crus Approach + ◦

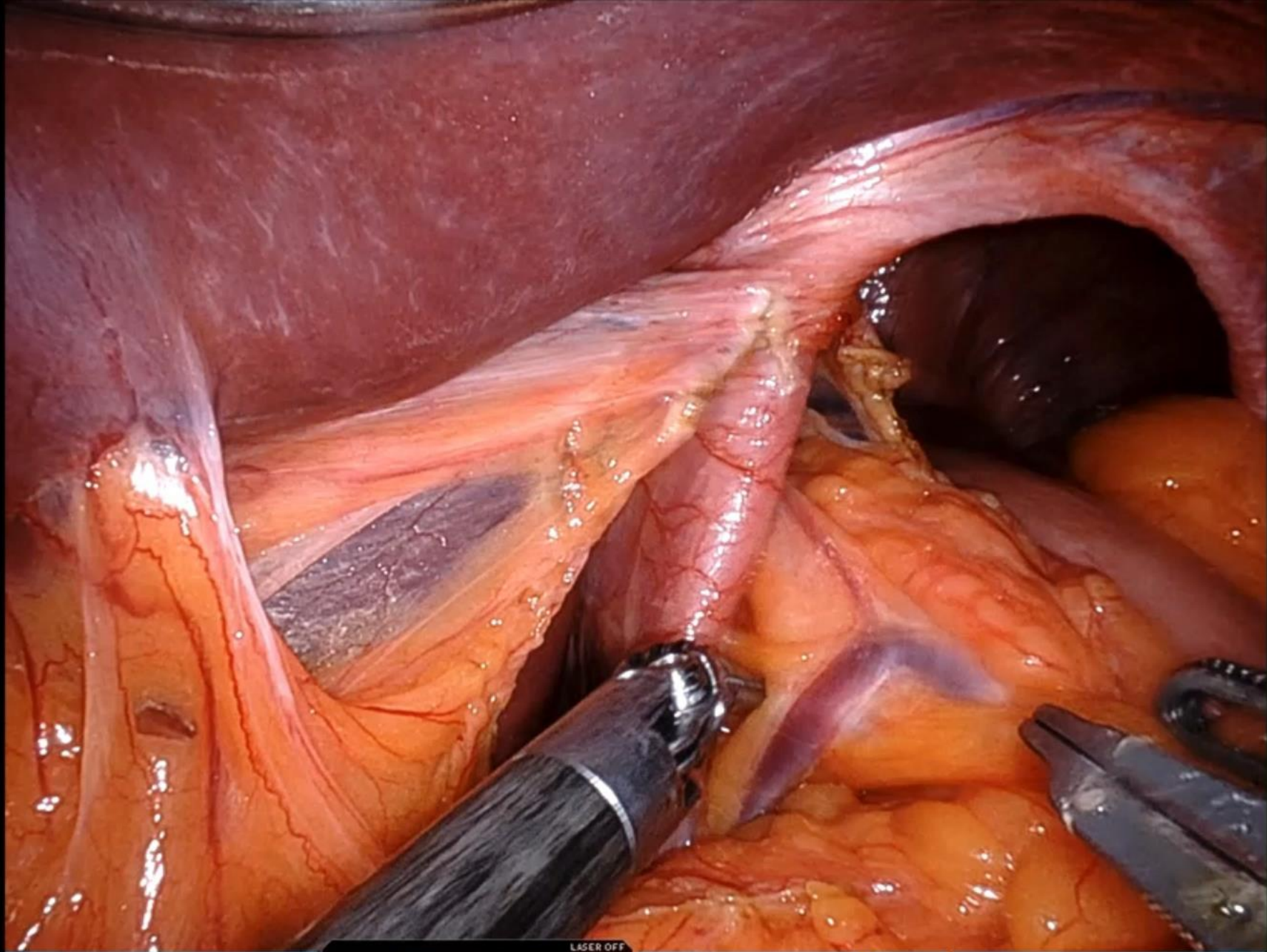
---



1 CADIERE FORCEPS      2      31°      0°      LASER OFF      1x 30°      3 SYNCHROSEAL      R SYNC      R COAG      4 CADIERE FORCEPS

# Preservation of the Peritoneum





1 CADIERE FORCEPS      2 30° REV      3 SYNCHROSEAL      4 CADIERE FORCEPS

LASER OFF      R SYNC      R SEAL

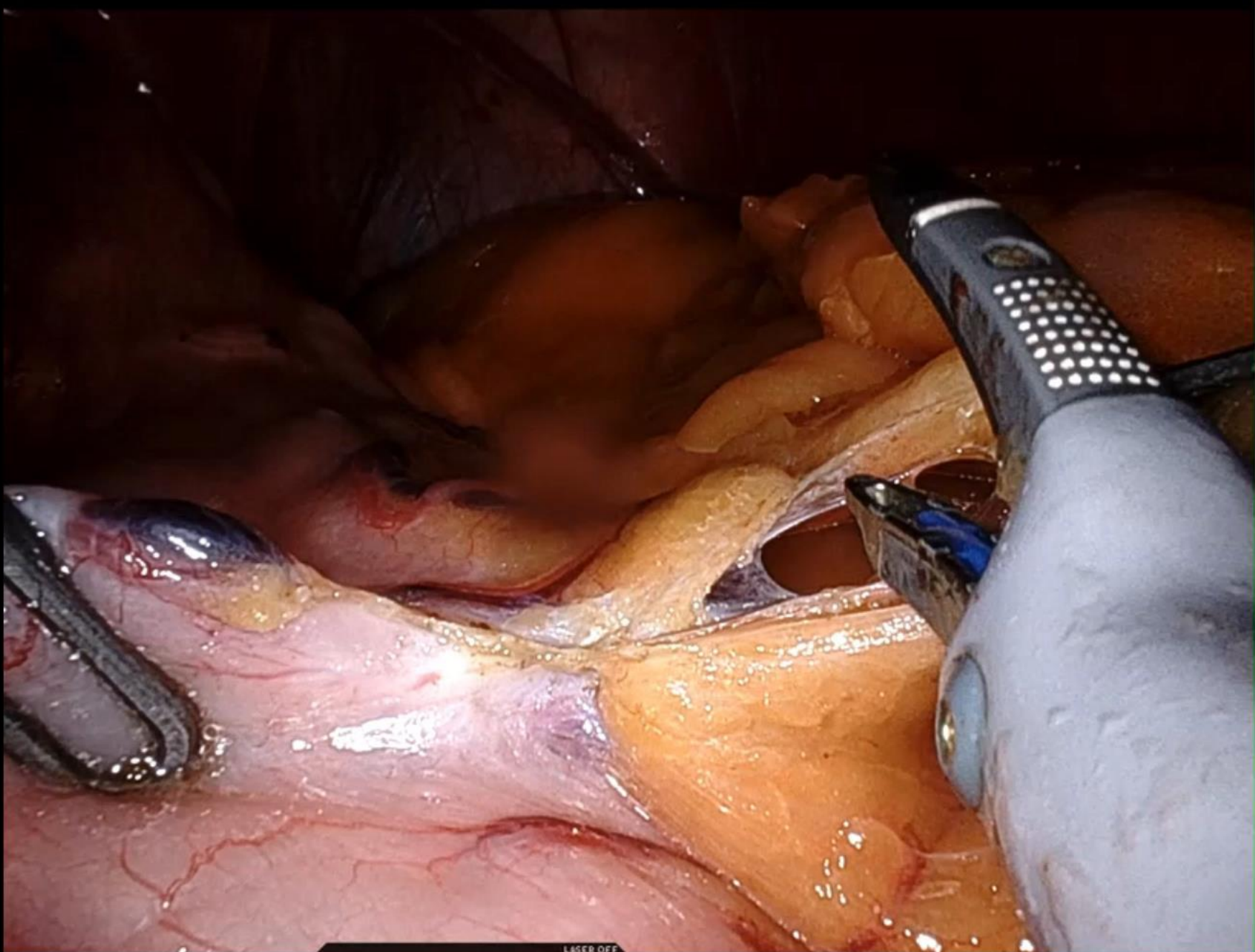
1x 30°      0°

# Takedown of Short Gastrics for Left Crus Exposure & Reduction of Anterior Sac

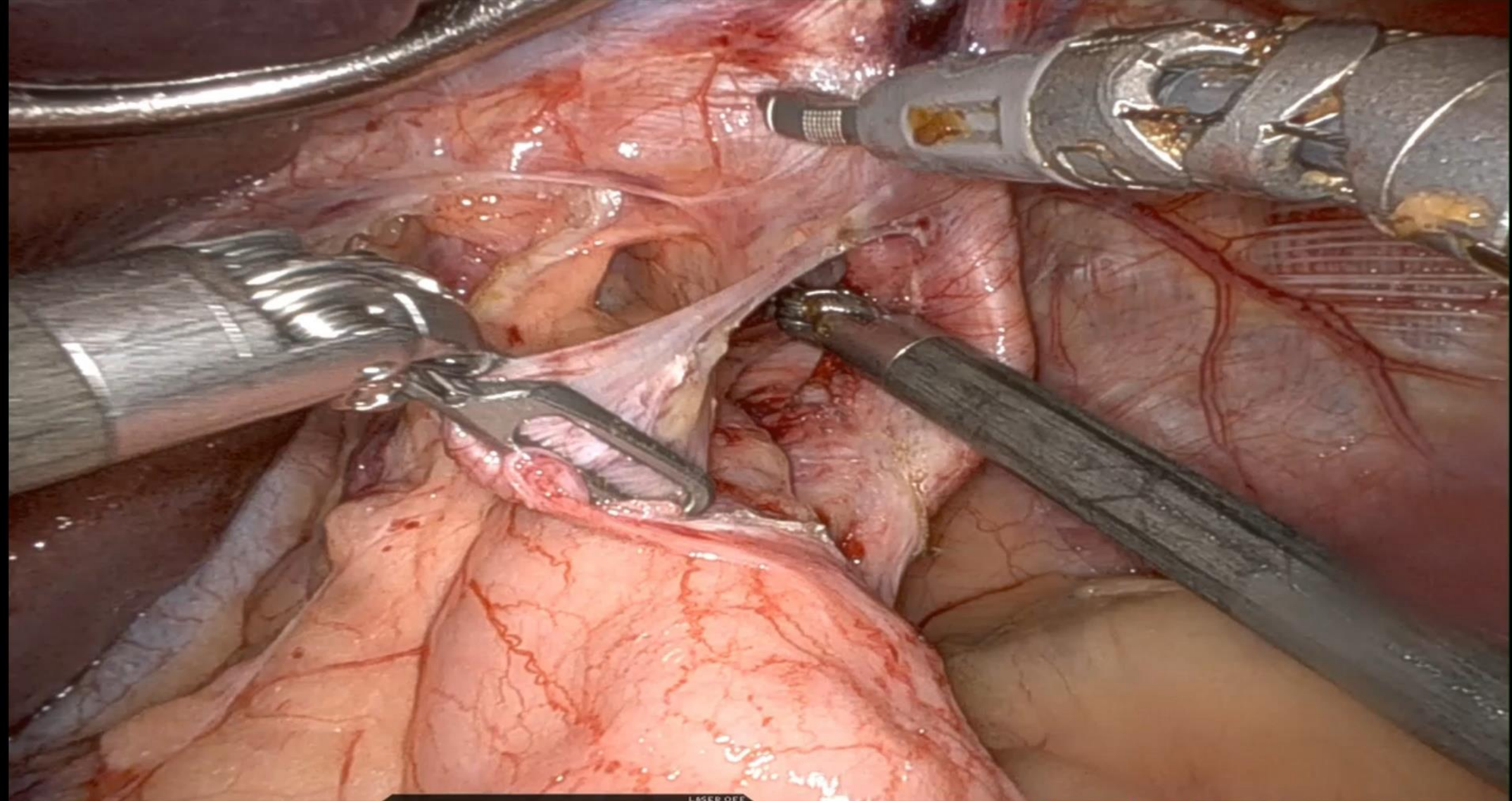
+  
•  
◦

+  
•  
◦





1 CADIERE FORCEPS      2 30° REV 0° 1x 30° LASER OFF      3<sup>R</sup> SYNCHROSEAL SYNC COAG      4<sup>R</sup> CADIERE FORCEPS



1

CADIERE FORCEPS

2



31°



LASER OFF

1x 30°

3

SYNCHROSEAL

R SYNC

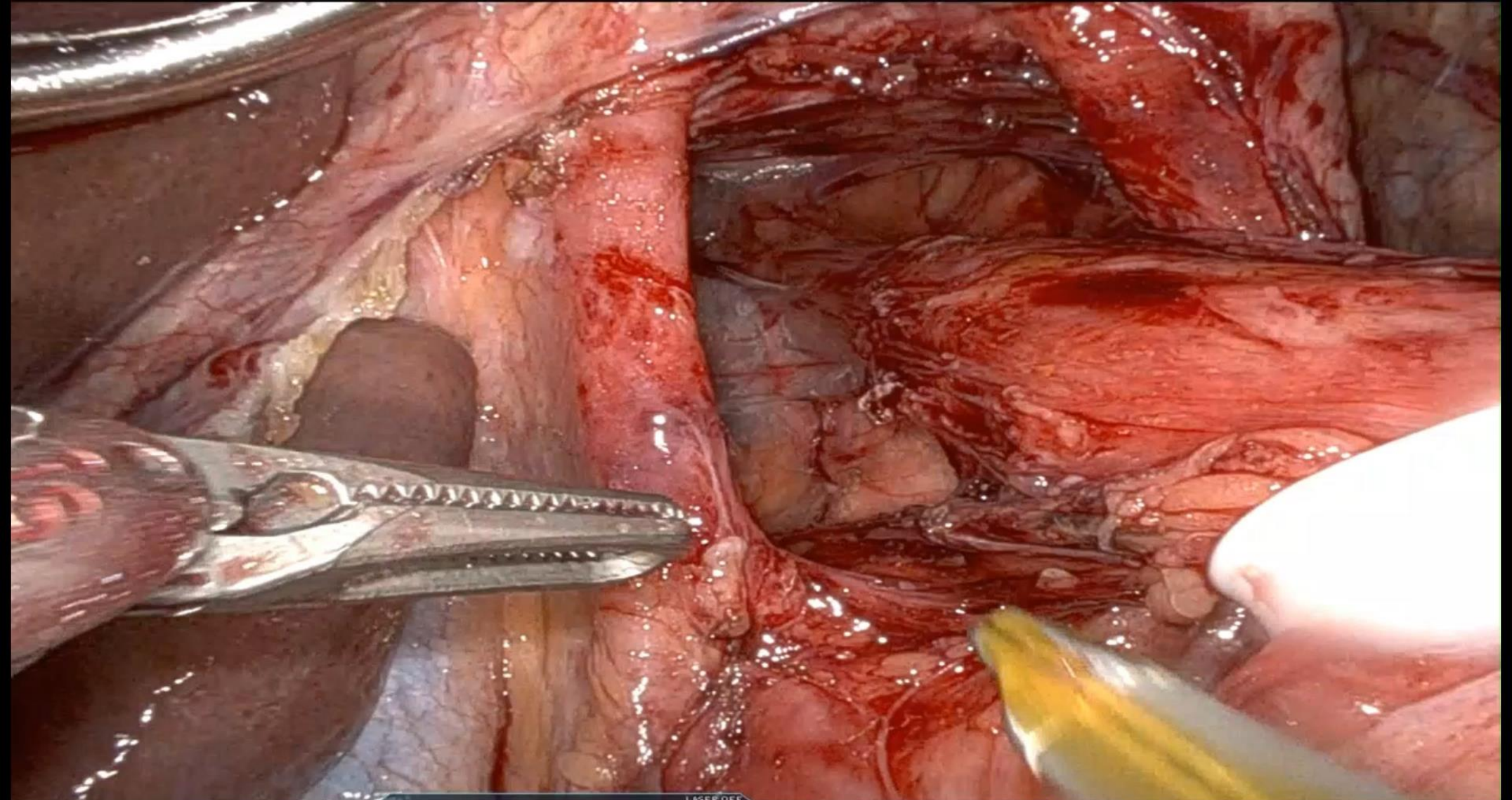
R COAG

4

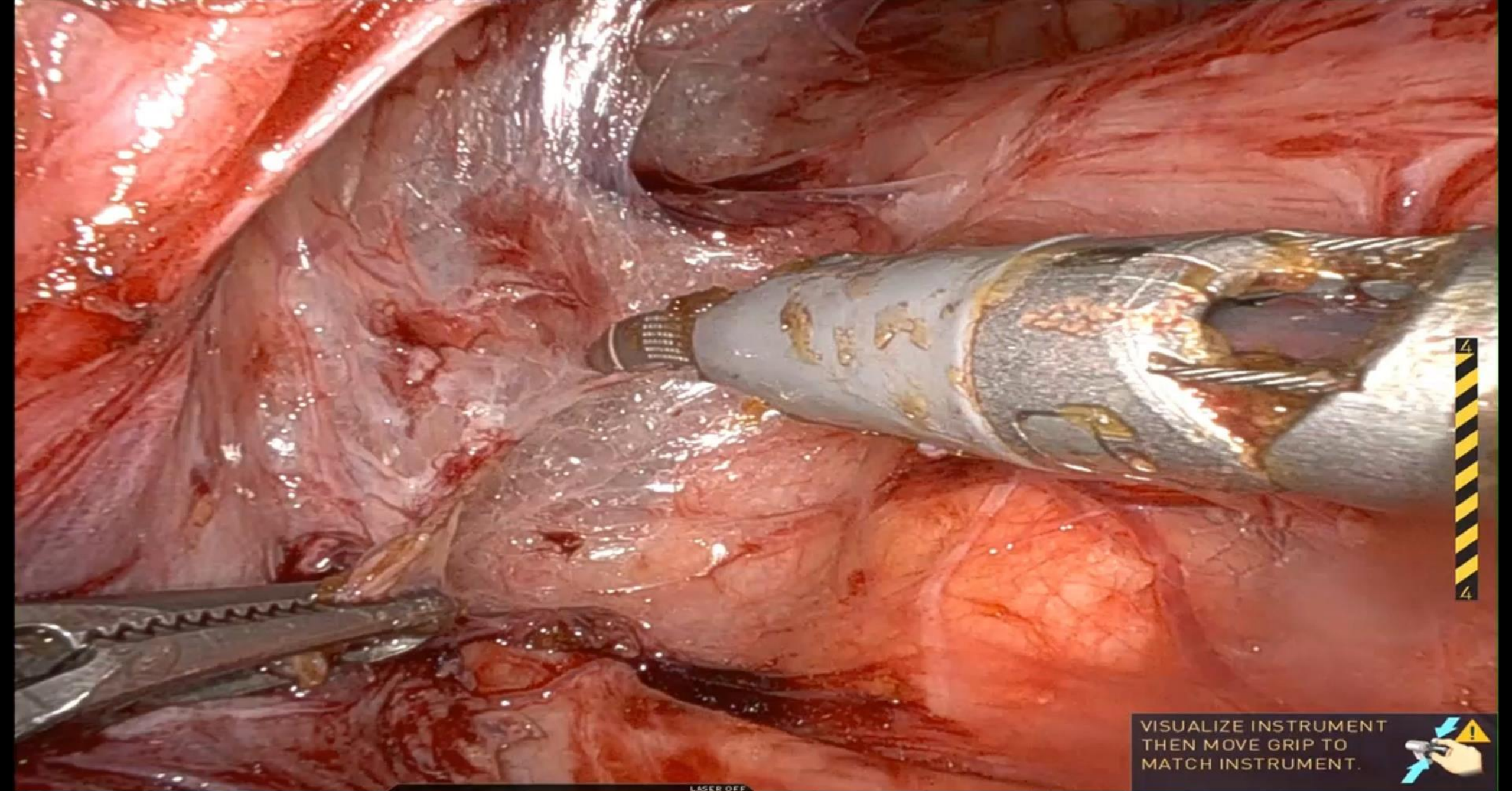
CADIERE FORCEPS

# • + High Mediastinal Dissection • + ◦


---



1" CADIERE FORCEPS      2      31°      0°      1x 30°      LASER OFF      3" SYNCHROSEAL      R SYNC      R SEAL      4" CADIERE FORCEPS


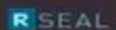


VISUALIZE INSTRUMENT  
THEN MOVE GRIP TO  
MATCH INSTRUMENT.

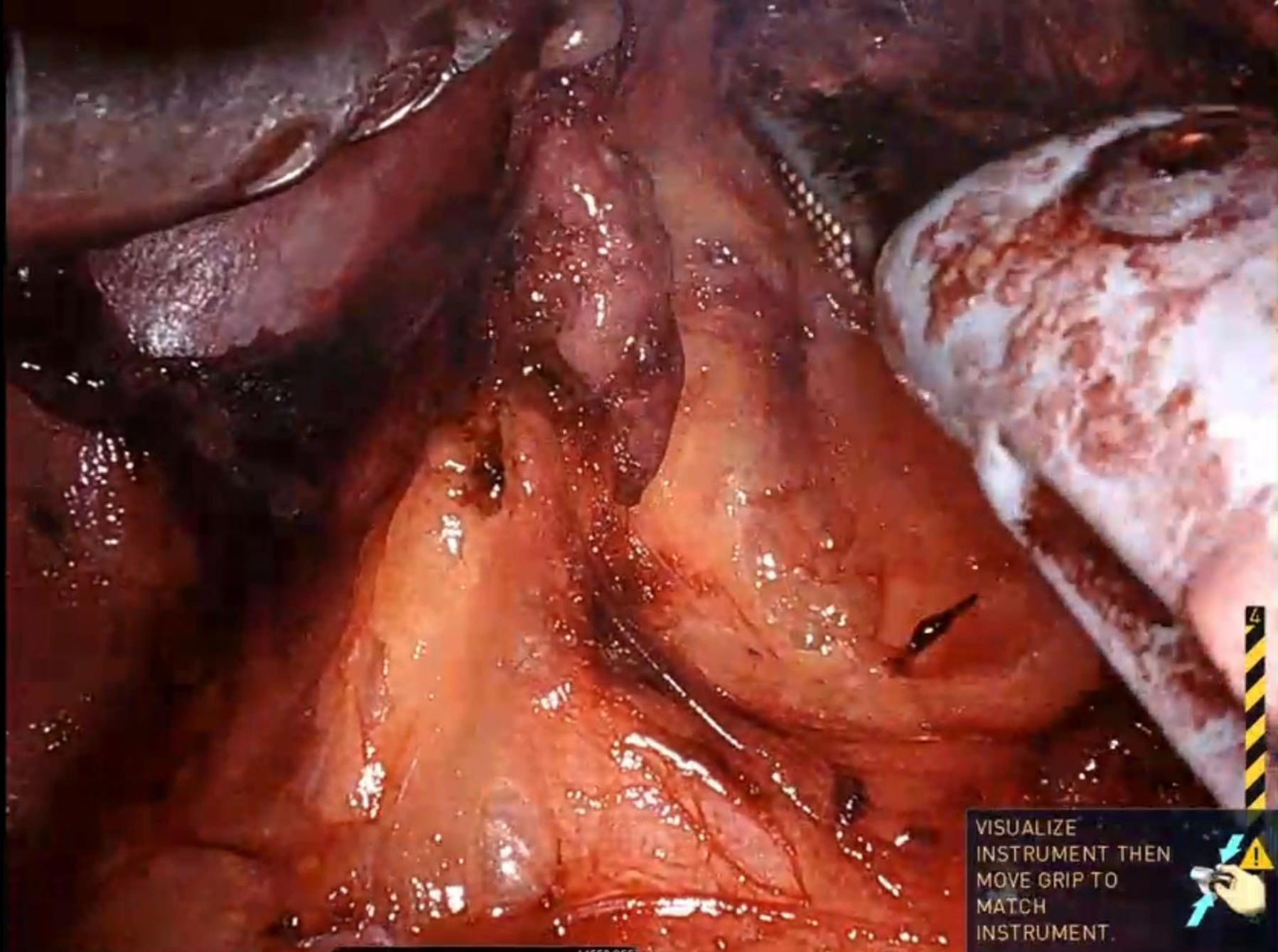


1 CADIERE FORCEPS

2  31°  0°  1x 30° LASER OFF

3<sup>R</sup> SYNCHROSEAL  

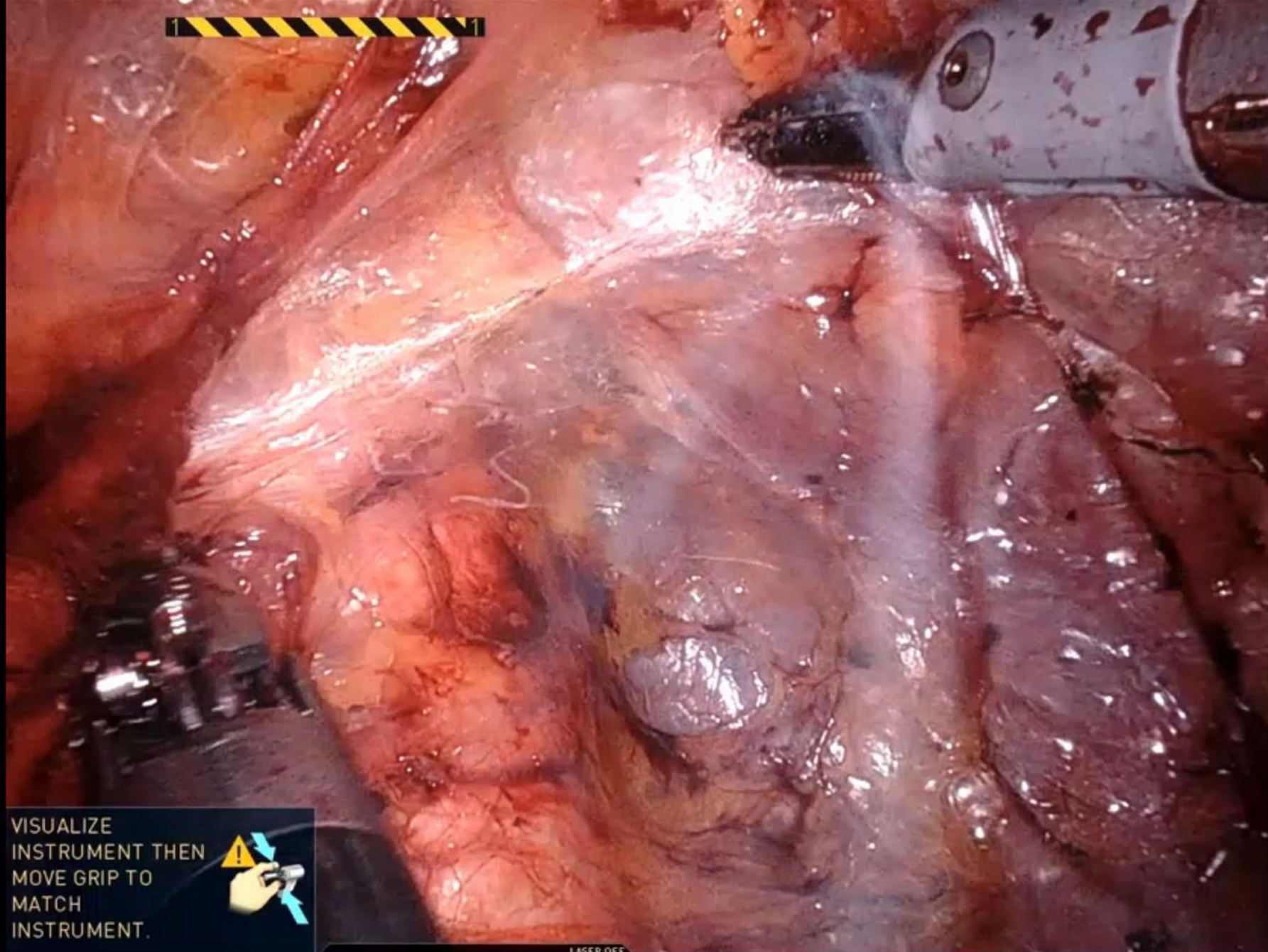
4<sup>R</sup> CADIERE FORCEPS



VISUALIZE  
INSTRUMENT THEN  
MOVE GRIP TO  
MATCH  
INSTRUMENT.



L 1 CADIERE FORCEPS 2 30° REV 0° 1x-30° LASER OFF 3 R SYNCHROSEAL R SYNC R SEAL 4 R CADIERE FORCEPS



1

VISUALIZE  
INSTRUMENT THEN  
MOVE GRIP TO  
MATCH  
INSTRUMENT.



1 CADIERE FORCEPS

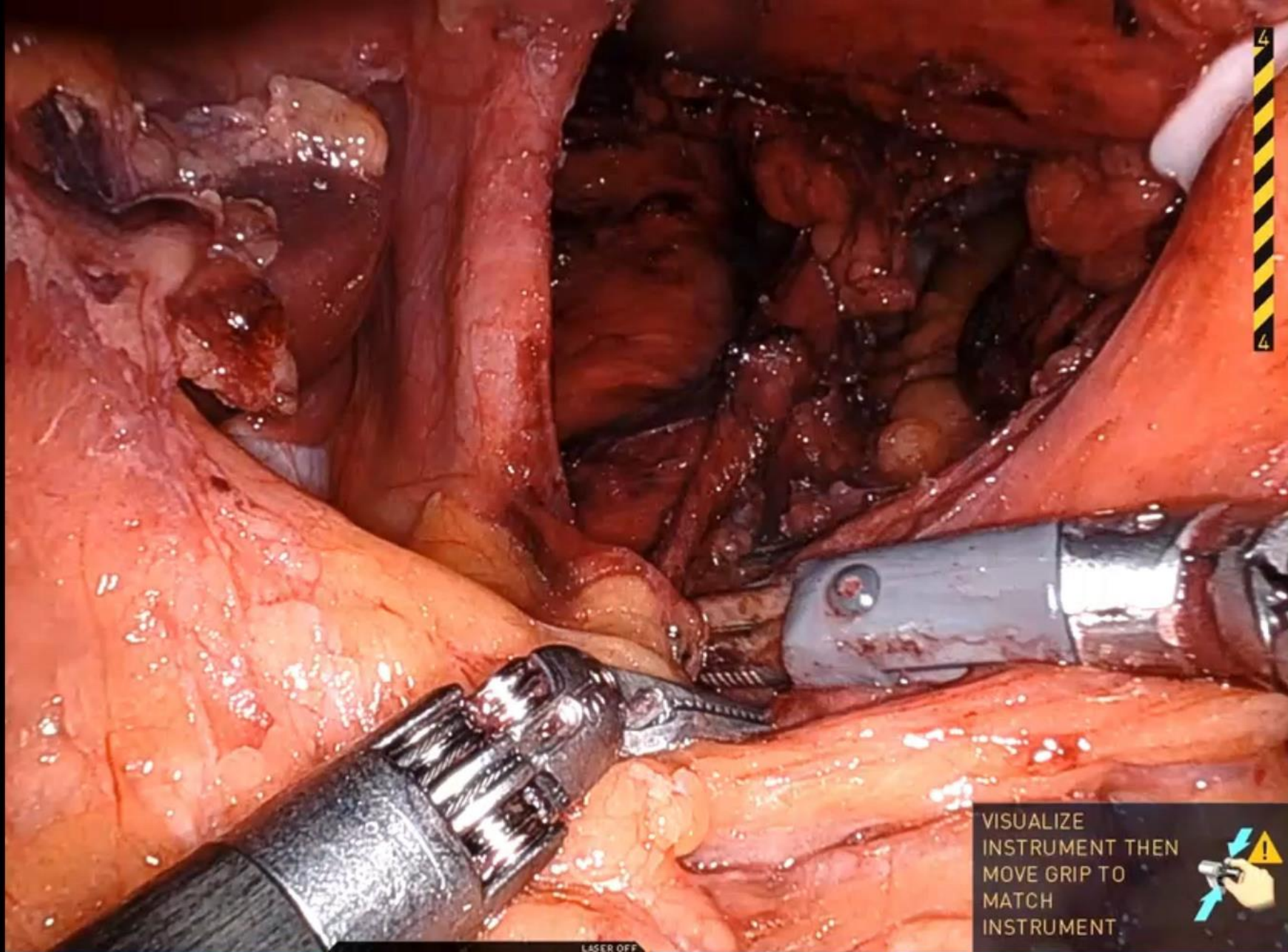
2 30° REV 0° LASER OFF 1x 30°

3 SYNCHROSEAL R SYNC R COAG


4 CADIERE FORCEPS

# Finishing Touches





VISUALIZE INSTRUMENT THEN MOVE GRIP TO MATCH INSTRUMENT

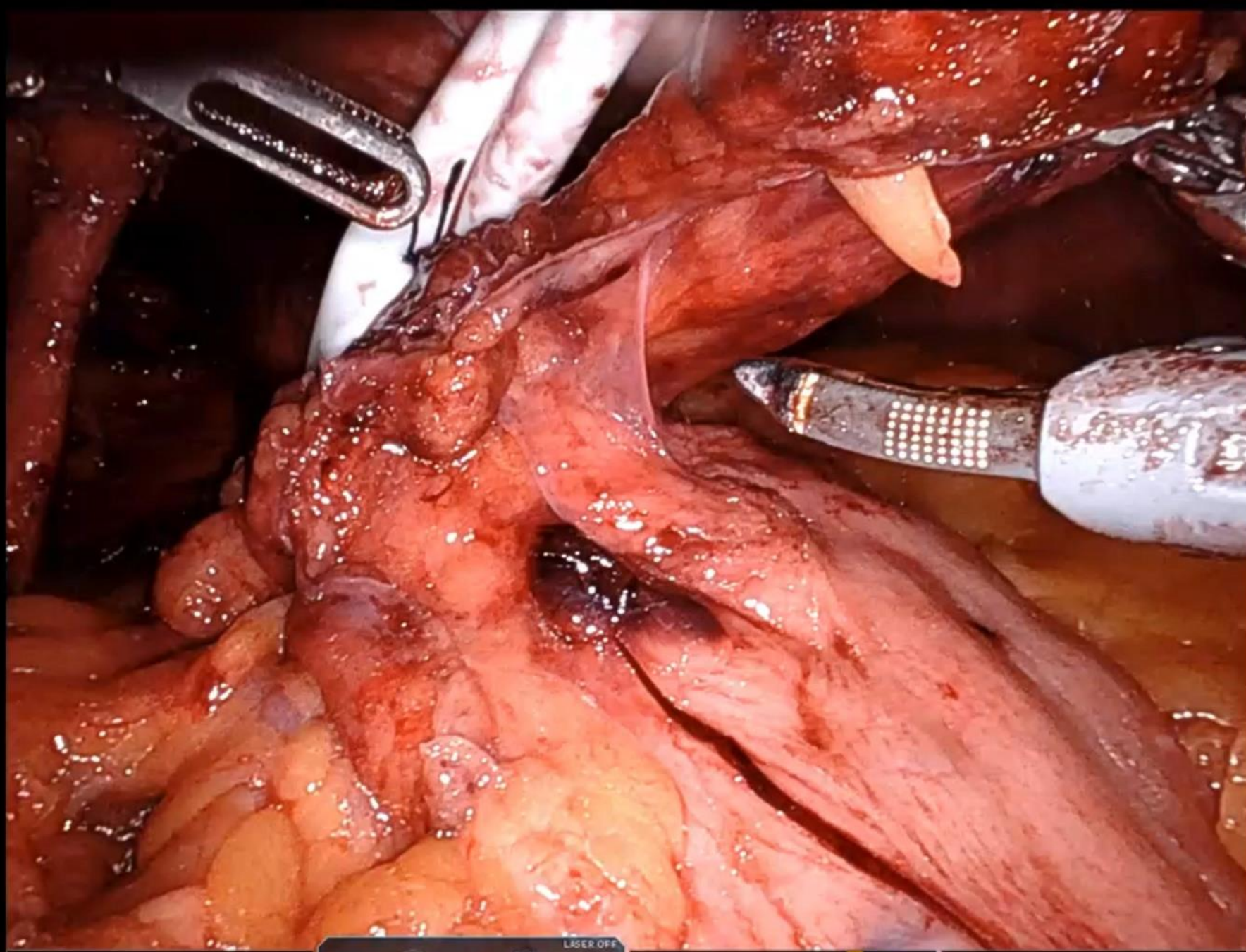


**1** CADIERE FORCEPS

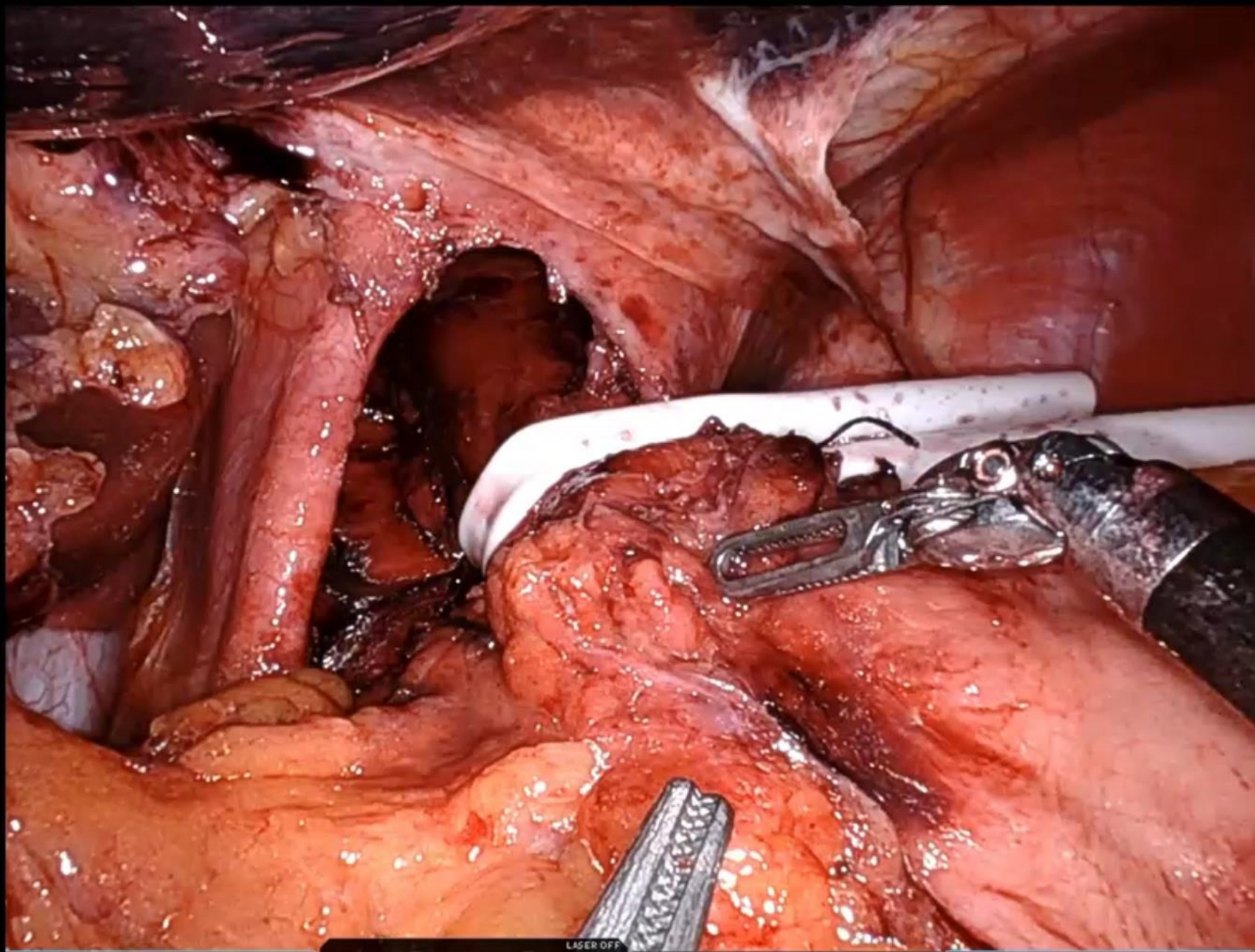
**2** 30° REV 0° 1x 30° LASER OFF

**3** SYNCHROSEAL R SYNC R SEAL

**4** CADIERE FORCEPS



1<sup>M</sup> CADIERE FORCEPS      2      30° REV      0°      1x 30°      3<sup>M</sup> SYNCHROSEAL      R SYNC      R COAG      4<sup>M</sup> CADIERE FORCEPS

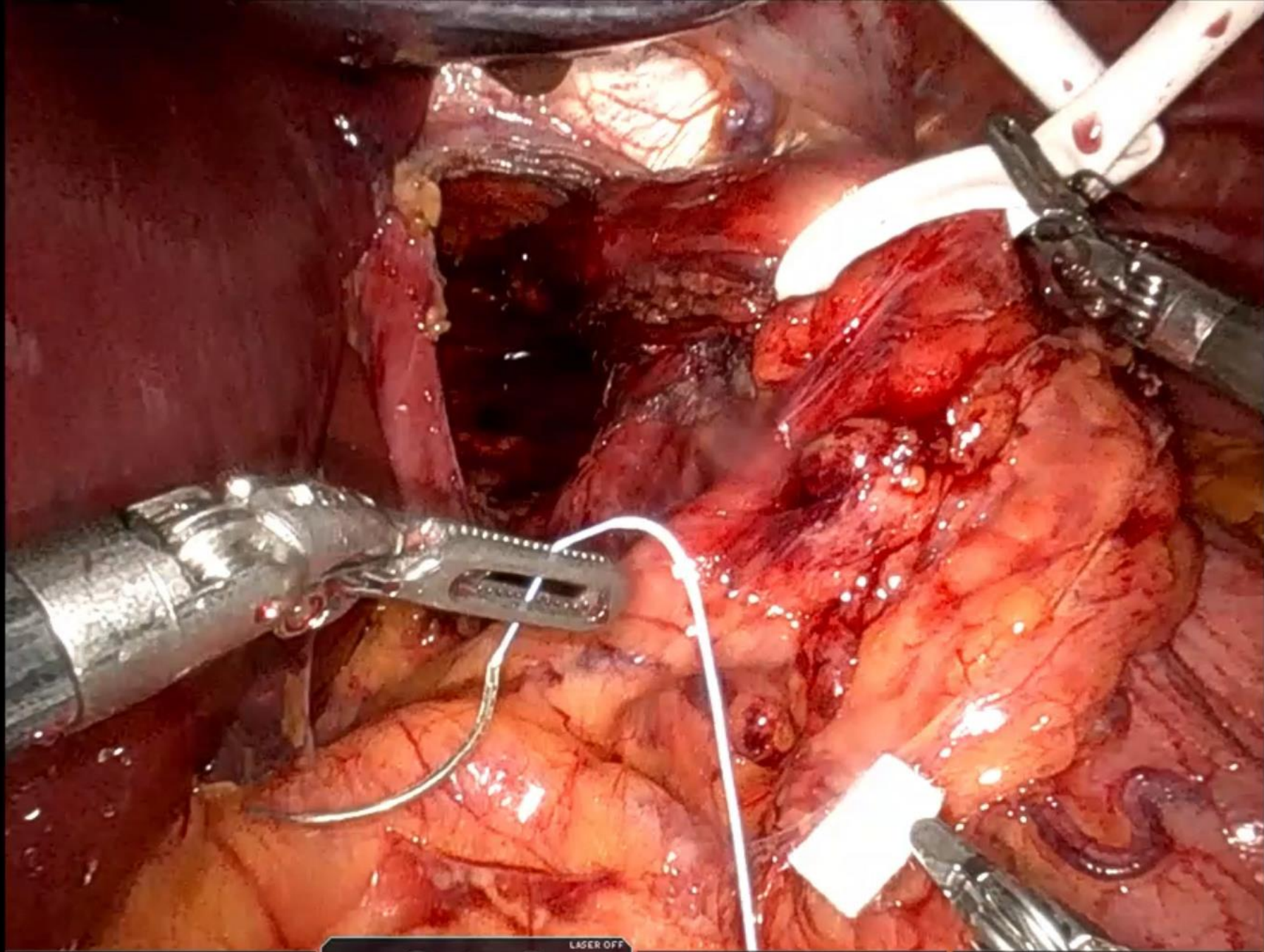


1 CADIERE FORCEPS      2 30° REV      3 MEGA SUTURECUT NEEDLE DRIVER      4 CADIERE FORCEPS

LASER OFF      1x 30°      0°

# Crural Closure & Mesh Reinforcement





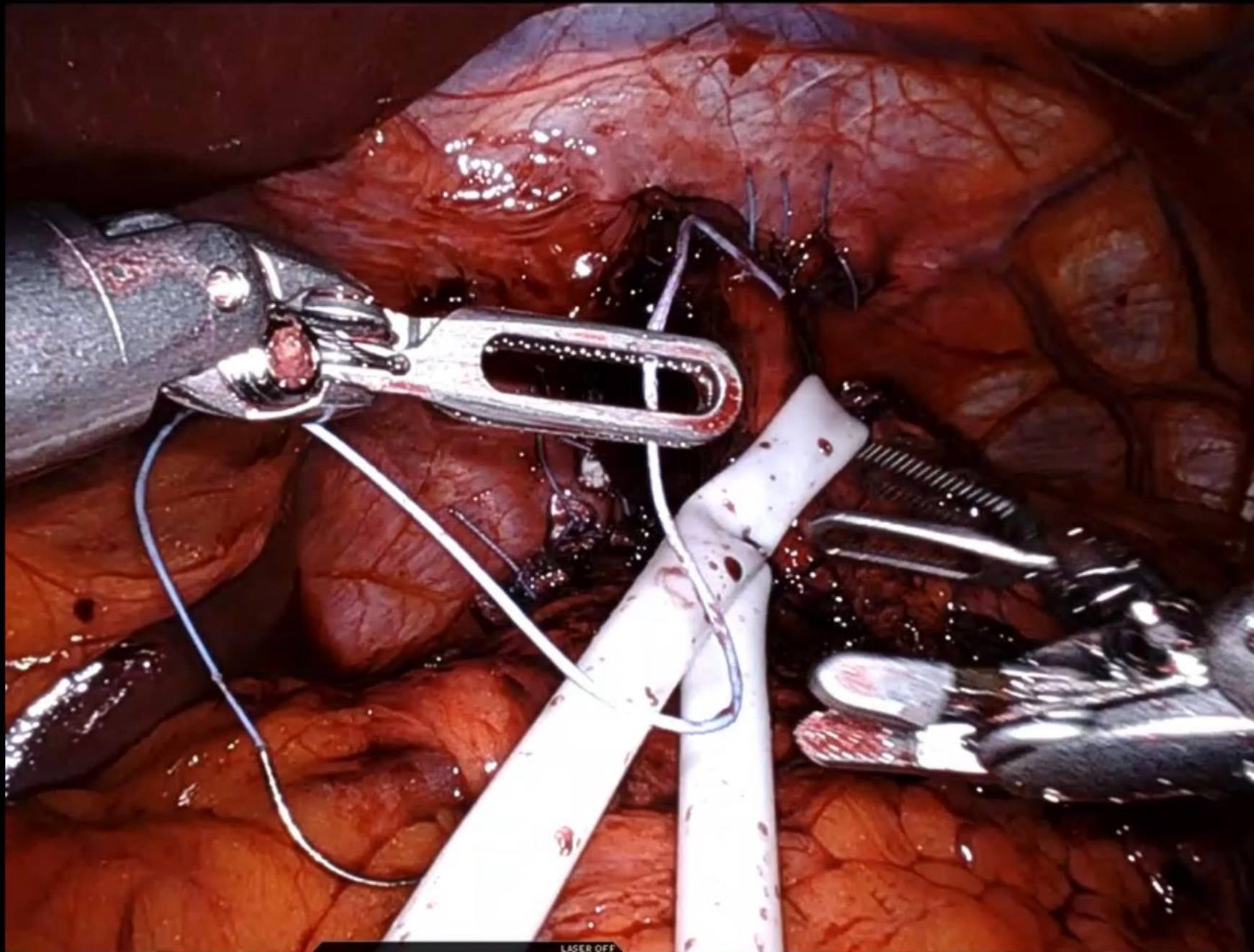
1" CADIERE FORCEPS

2    1x 30°  
28° REV 0°

LASER OFF

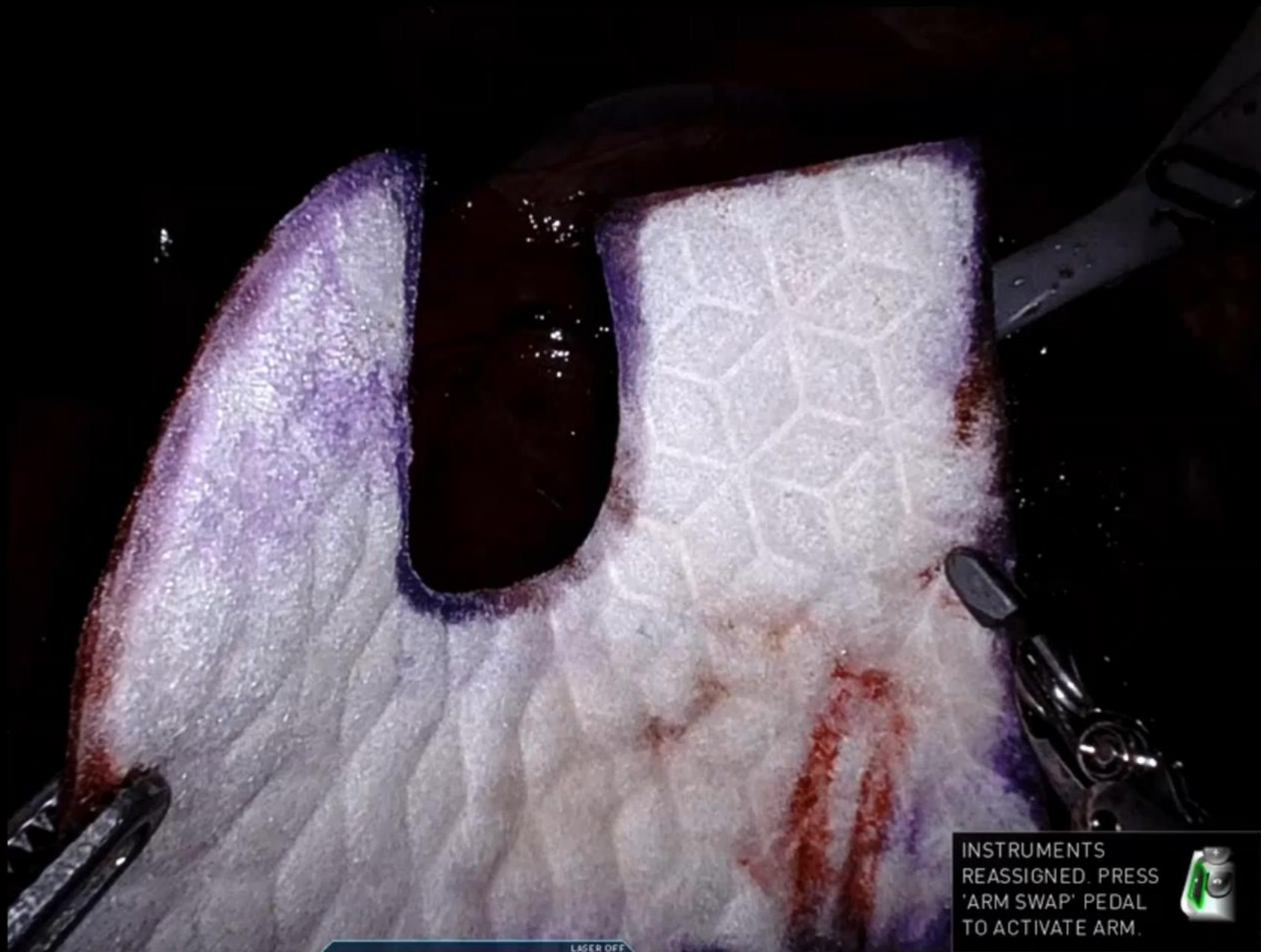
3" MEGA SUTURECUT NEEDLE DRIVER

4 CADIERE FORCEPS



1 CADIÈRE FORCEPS      2 30° REV      3 MEGA SUTURECUT NEEDLE DRIVER      4 CADIÈRE FORCEPS

LASER OFF      1x 30°      0°




1 CADIERE FORCEPS

2   1x 30° LASER OFF

3 MEGA SUTURECUT NEEDLE DRIVER

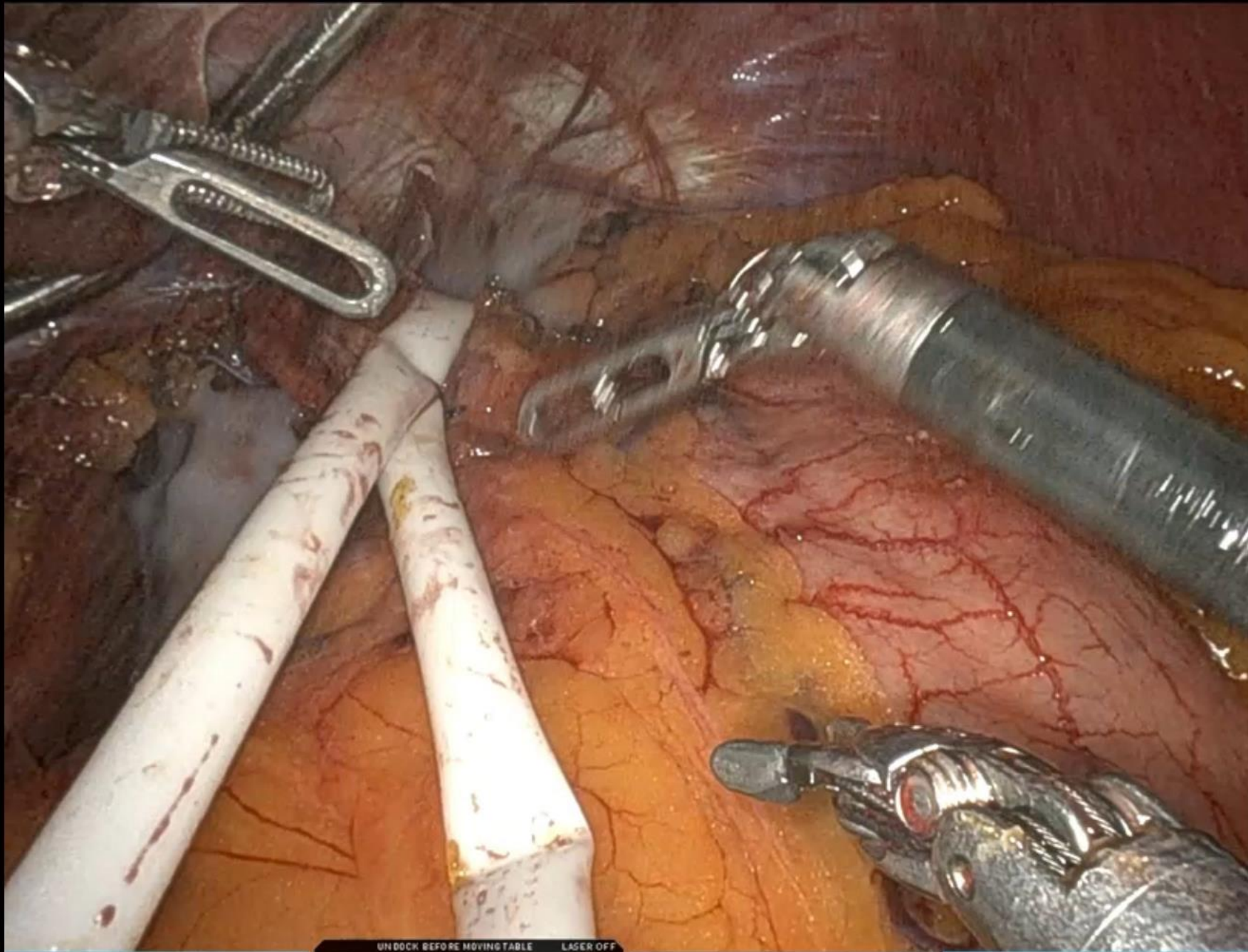
4 CADIERE FORCEPS

INSTRUMENTS REASSIGNED. PRESS 'ARM SWAP' PEDAL TO ACTIVATE ARM. 



# Fundoplication



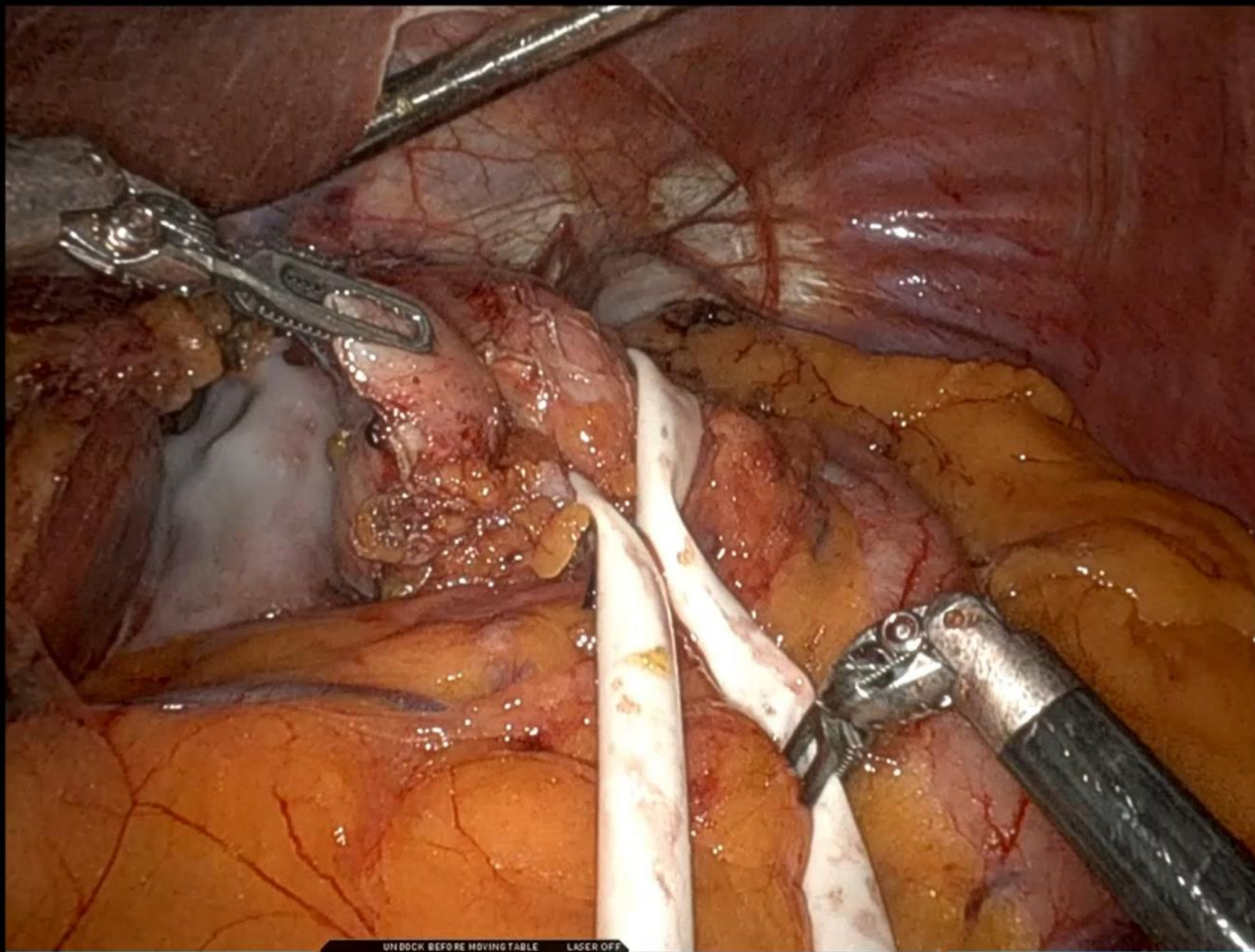


1 CADIERE FORCEPS

2 UNDOCK BEFORE MOVING TABLE LASER OFF 1x 30°

3 MEGA SUTURECUT NEEDLE DRIVER

4 CADIERE FORCEPS



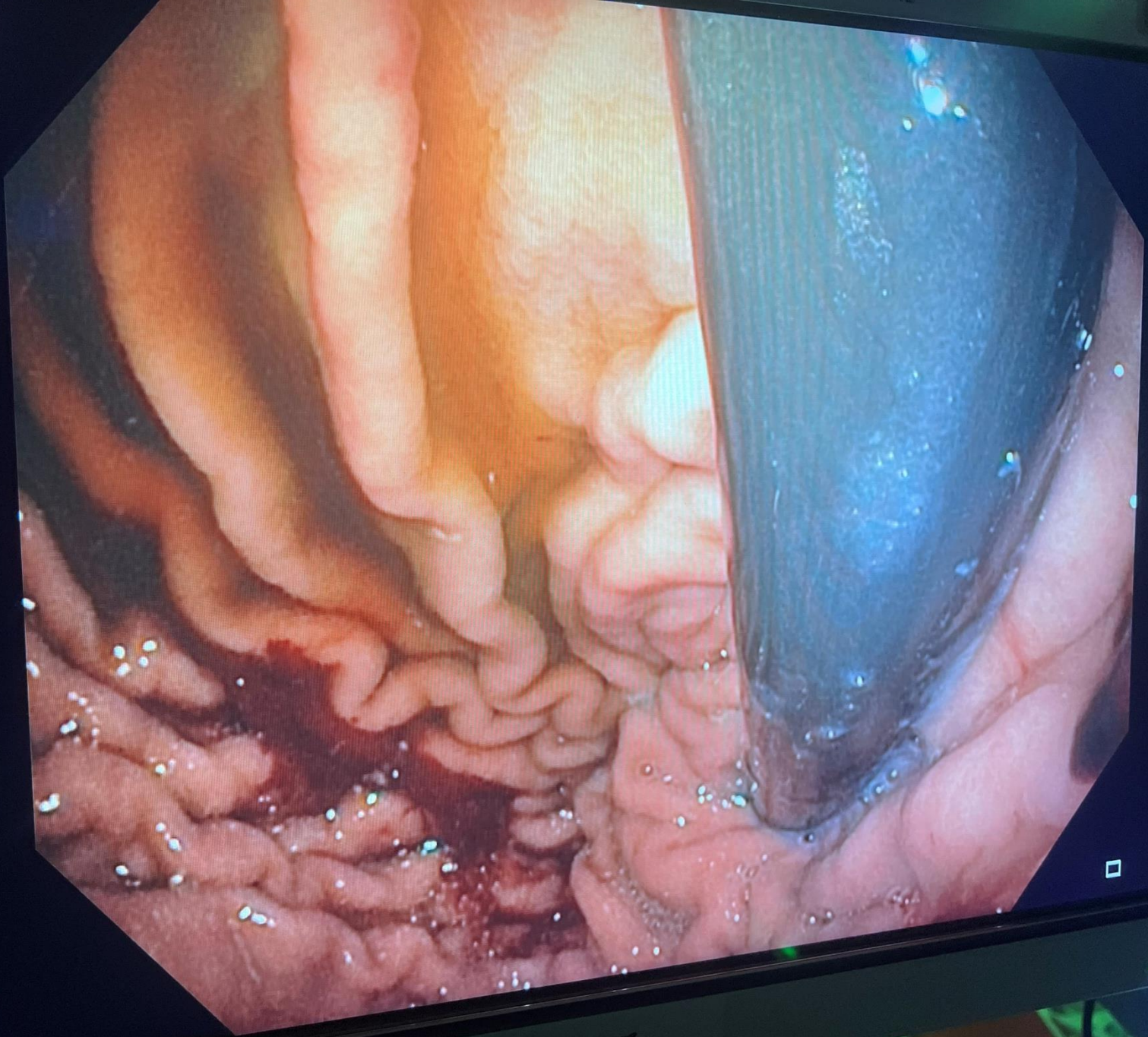
UNDOCK BEFORE MOVING TABLE LASER OFF

1 CADIERE FORCEPS

2 1x 30°

3 MEGA SUTURECUT NEEDLE DRIVER

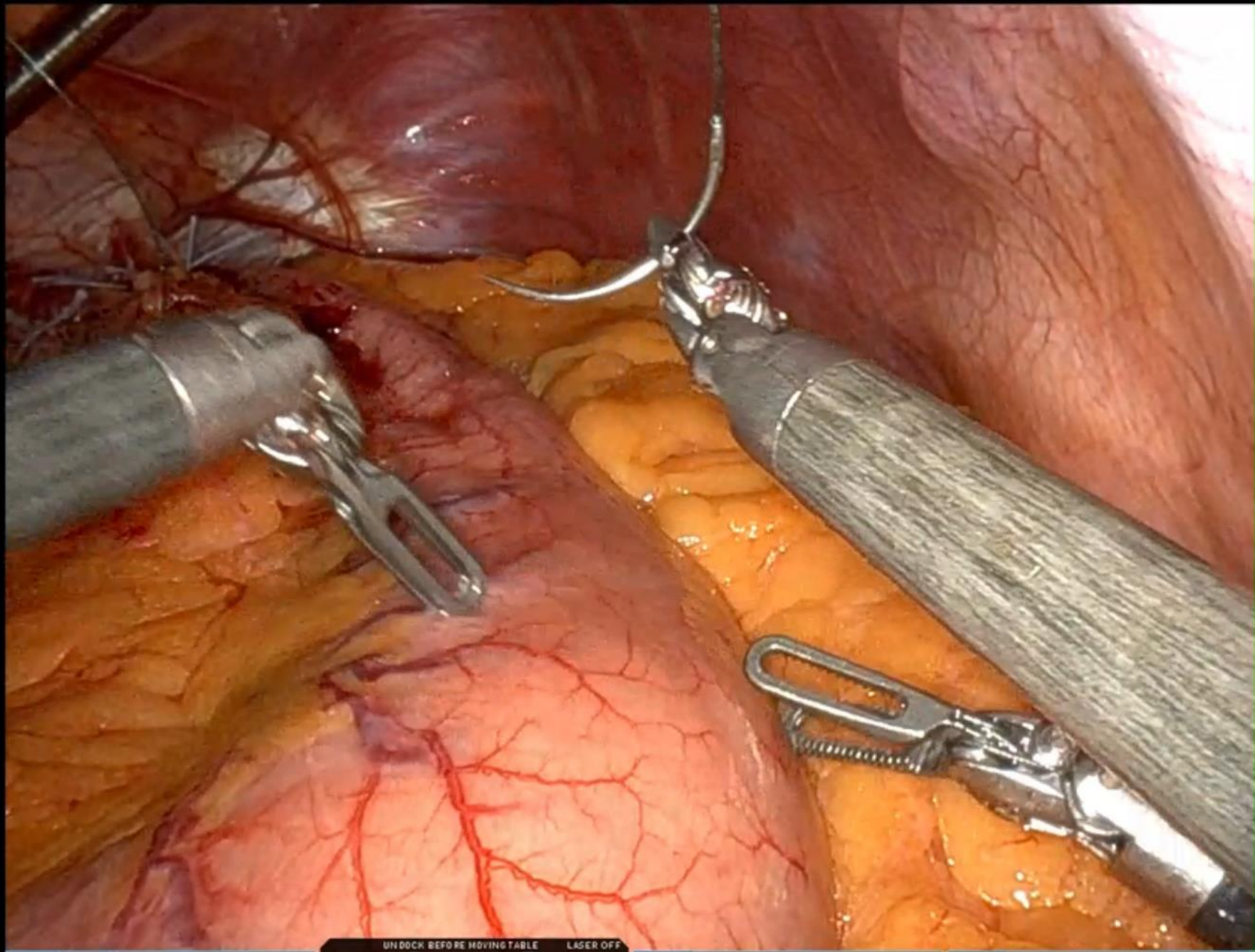
4 CADIERE FORCEPS



BONCH / DR FOSTER #5

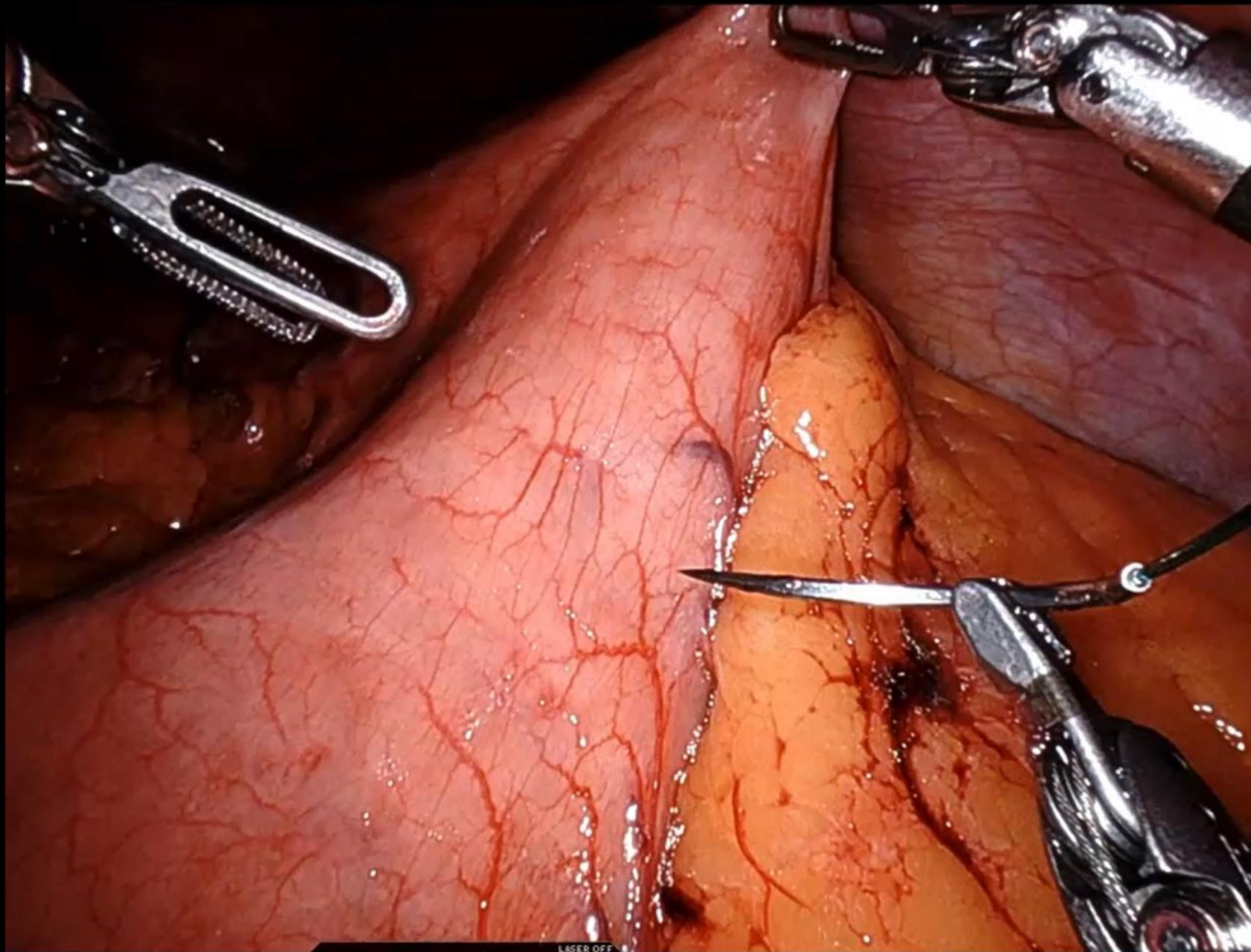
# Gastropexy





UNDOCK BEFORE MOVING TABLE      LASER OFF

1 <sup>L</sup> CADIERE FORCEPS	2    1x 30°	3 <sup>R</sup> MEGA SUTURECUT NEEDLE DRIVER	4 <sup>R</sup> CADIERE FORCEPS
--------------------------------	---	---	--------------------------------




1 CADIERE FORCEPS      2 30° REV 0° 1x 30°      3 MEGA SUTURECUT NEEDLE DRIVER      4 CADIERE FORCEPS

LASER OFF



# Postoperative Adjuncts

1. Deep/Peaceful Extubation
  2. Scopolamine/Scheduled Zofran
  3. PRN Simethicone
  4. Dietary Education
  5. Medication Reconciliation
  6. Bowel Regimen
  7. 8 Weeks Lifting Restrictions
- 



# Questions?

Email: [ivhaskins@gmail.com](mailto:ivhaskins@gmail.com)

 [@IvyNHaskinsMD](https://twitter.com/IvyNHaskinsMD)